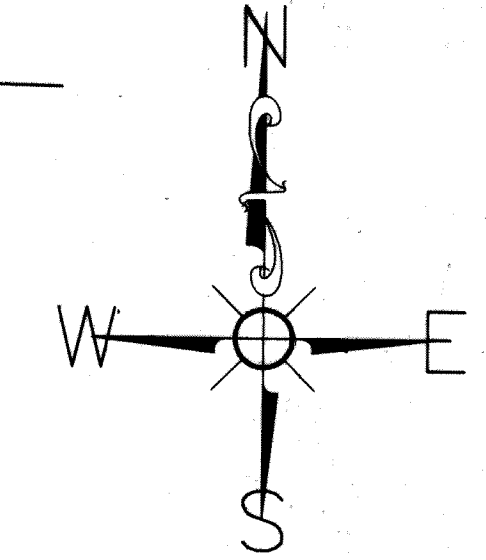
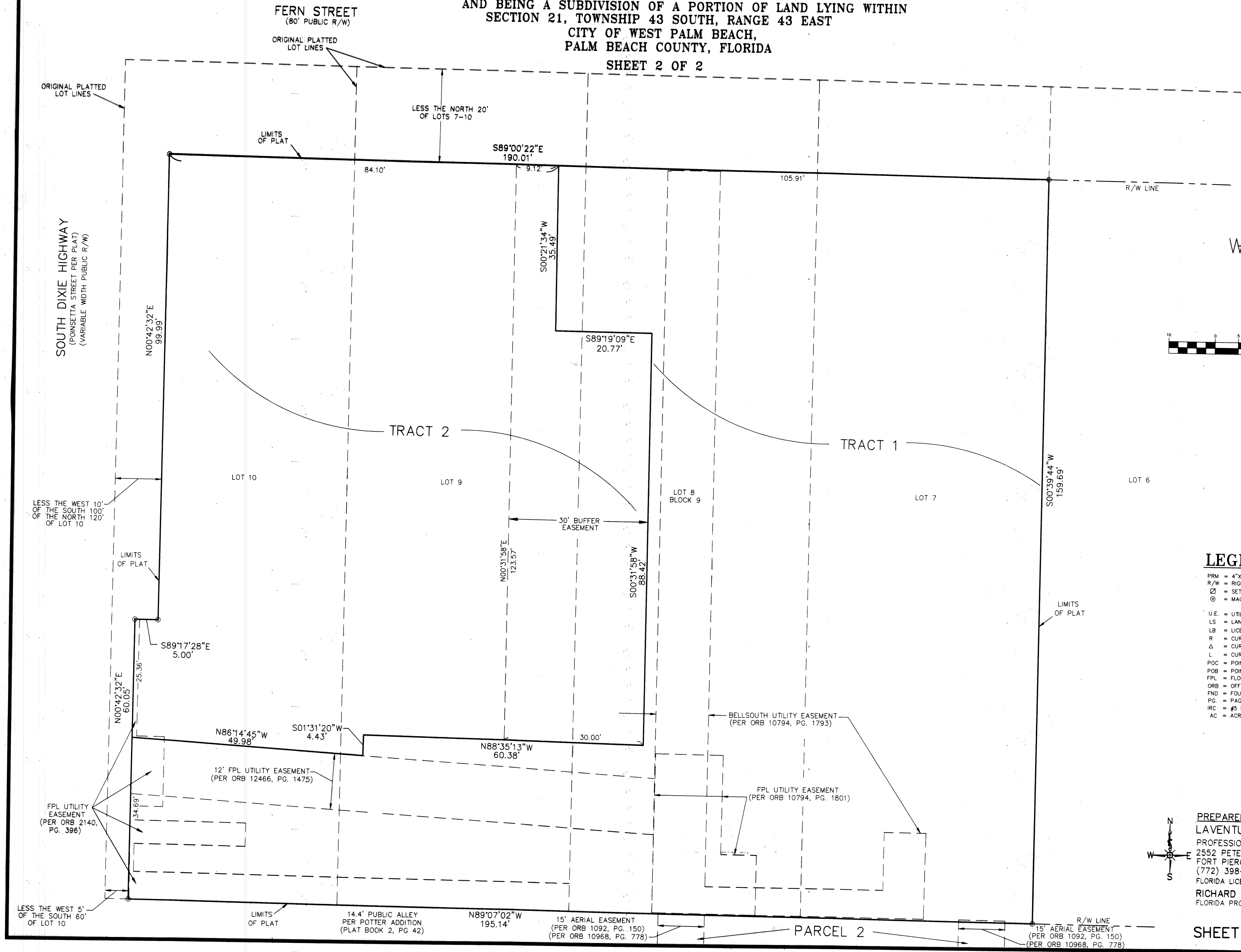


# ALEXANDER LOFTS

BEING A REPLAT OF A PORTION OF LOTS 7-10, BLOCK 9,  
 PLAT OF THE MAP OF THE TOWN OF WEST PALM BEACH  
 AND BEING A SUBDIVISION OF A PORTION OF LAND LYING WITHIN  
 SECTION 21, TOWNSHIP 43 SOUTH, RANGE 43 EAST  
 CITY OF WEST PALM BEACH,  
 PALM BEACH COUNTY, FLORIDA

SHEET 2 OF 2

184



### LEGEND:

- PRM = 4"x4" PERMANENT REFERENCE MONUMENT
- R/W = RIGHT-OF-WAY
- = SET PRM LB 7056
- ⊙ = MAG NAIL & DISK "PRM LB 7056" (ALTERNATE MONUMENTATION)
- U.E. = UTILITY EASEMENT
- LS = LAND SURVEYOR
- LB = LICENSED LAND SURVEYING BUSINESS
- R = CURVE RADIUS
- Δ = CURVE CENTRAL ANGLE
- L = CURVE LENGTH
- POC = POINT OF COMMENCEMENT
- POB = POINT OF BEGINNING
- FPL = FLORIDA POWER AND LIGHT
- ORB = OFFICIAL RECORD BOOK
- FND = FOUND
- PG. = PAGE
- IRC = #5 IRON ROD & CAP
- AC = ACRES

PREPARED BY:  
**LAVENTURE & ASSOCIATES, INC.**  
 PROFESSIONAL SURVEYING AND MAPPING  
 2552 PETERS ROAD SUITE D  
 FORT PIERCE, FLORIDA 34945  
 (772) 398-6430 PHONE (772) 398-6426 FAX  
 FLORIDA LICENSED BUSINESS # 7056  
**RICHARD C. LAVENTURE**  
 FLORIDA PROFESSIONAL LAND SURVEYOR # 5209

SHEET 2 OF 2